

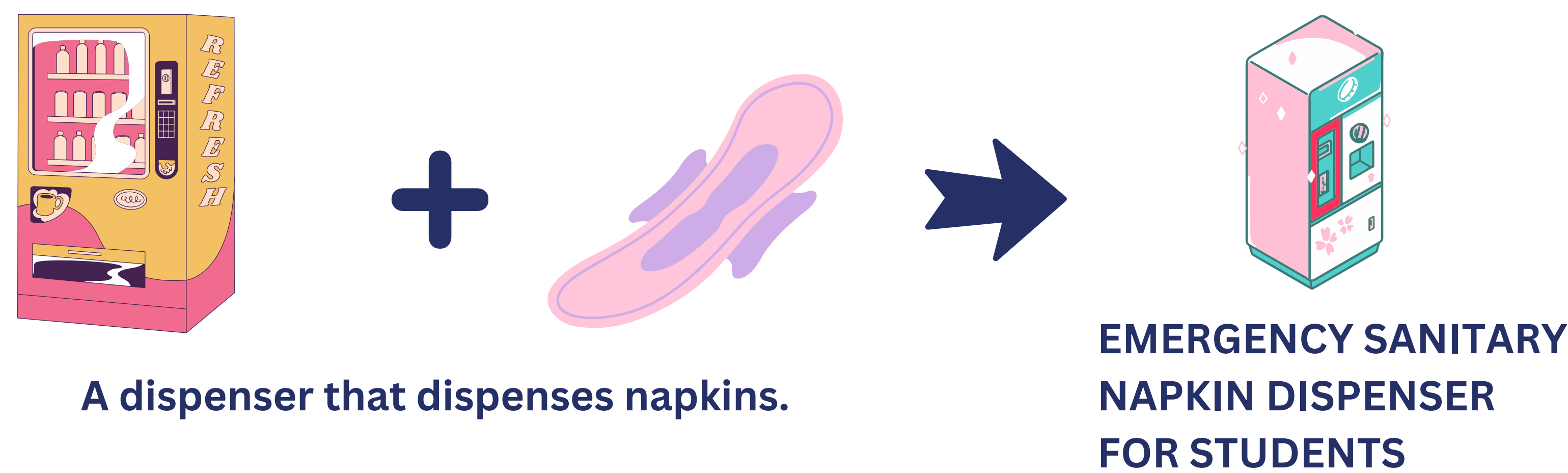
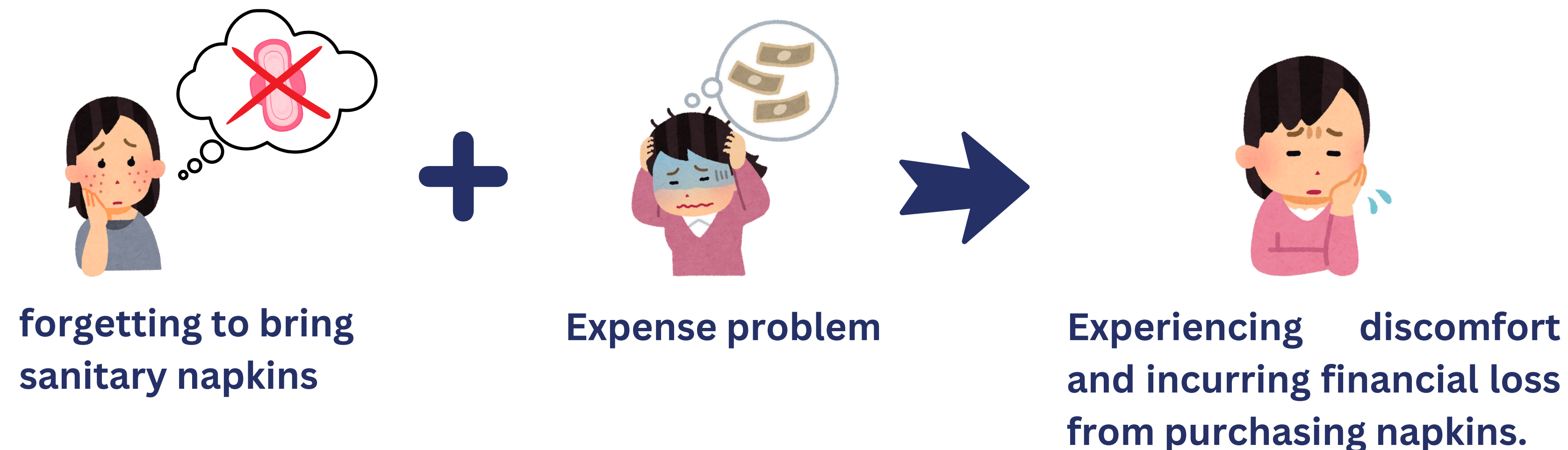
EMERGENCY SANITARY NAPKIN DISPENSER FOR STUDENTS

Princess Chulabhorn Science High School Lopburi

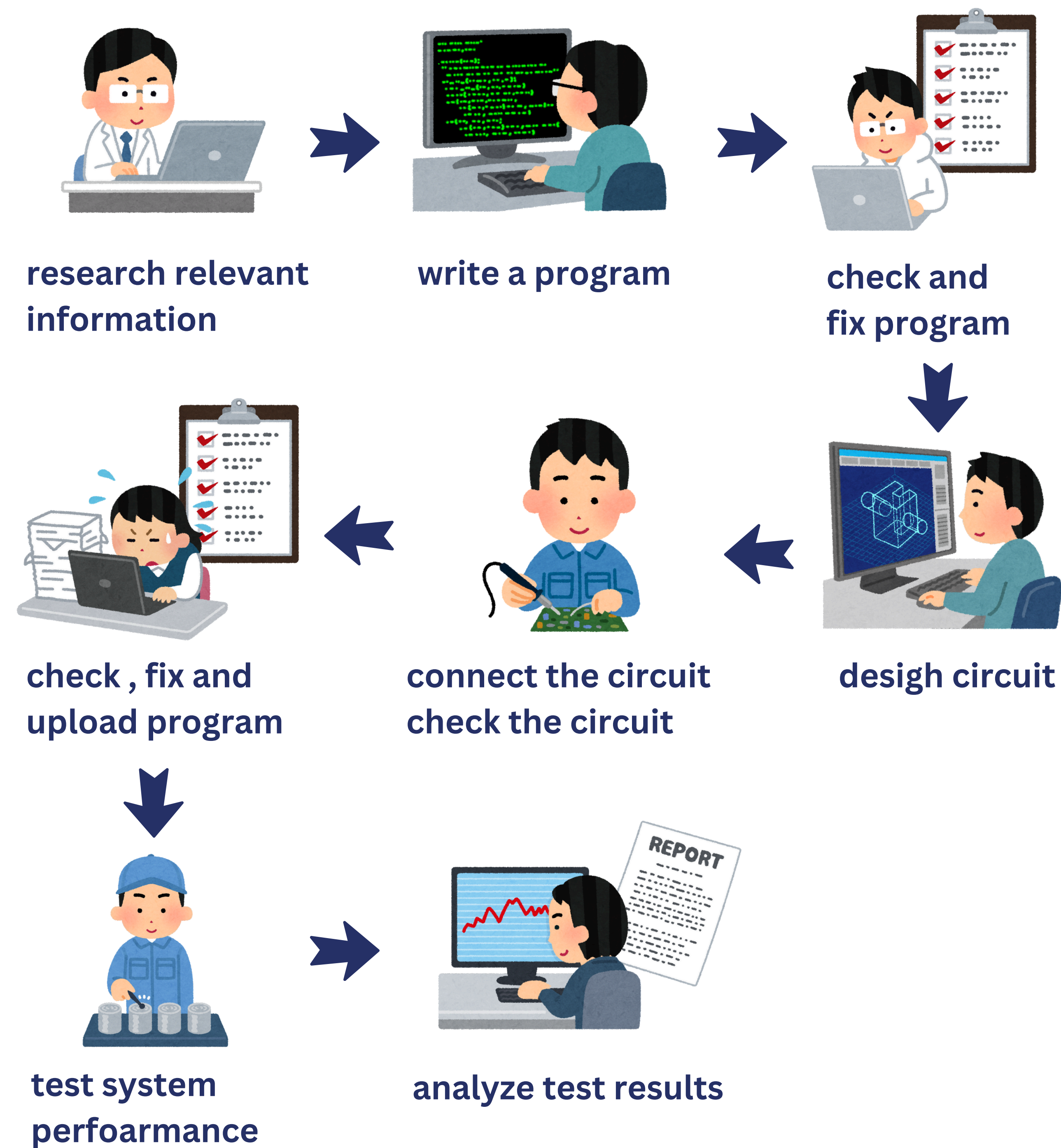
By : Puri Yamkleeb , Keerati Kiittisubkhachon

Advisor : Sophon klomkliang

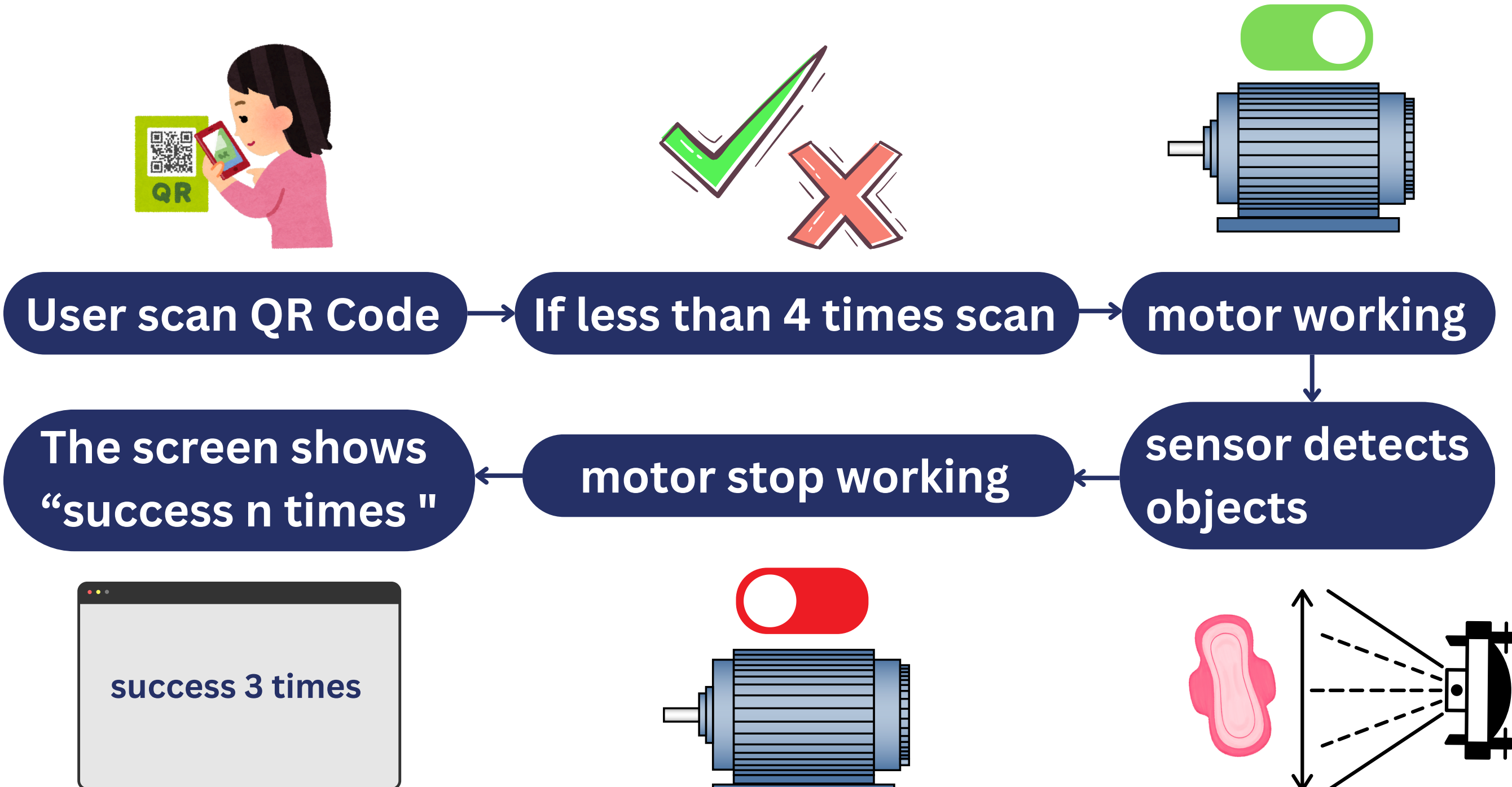
PROBLEM



FRAMEWORK

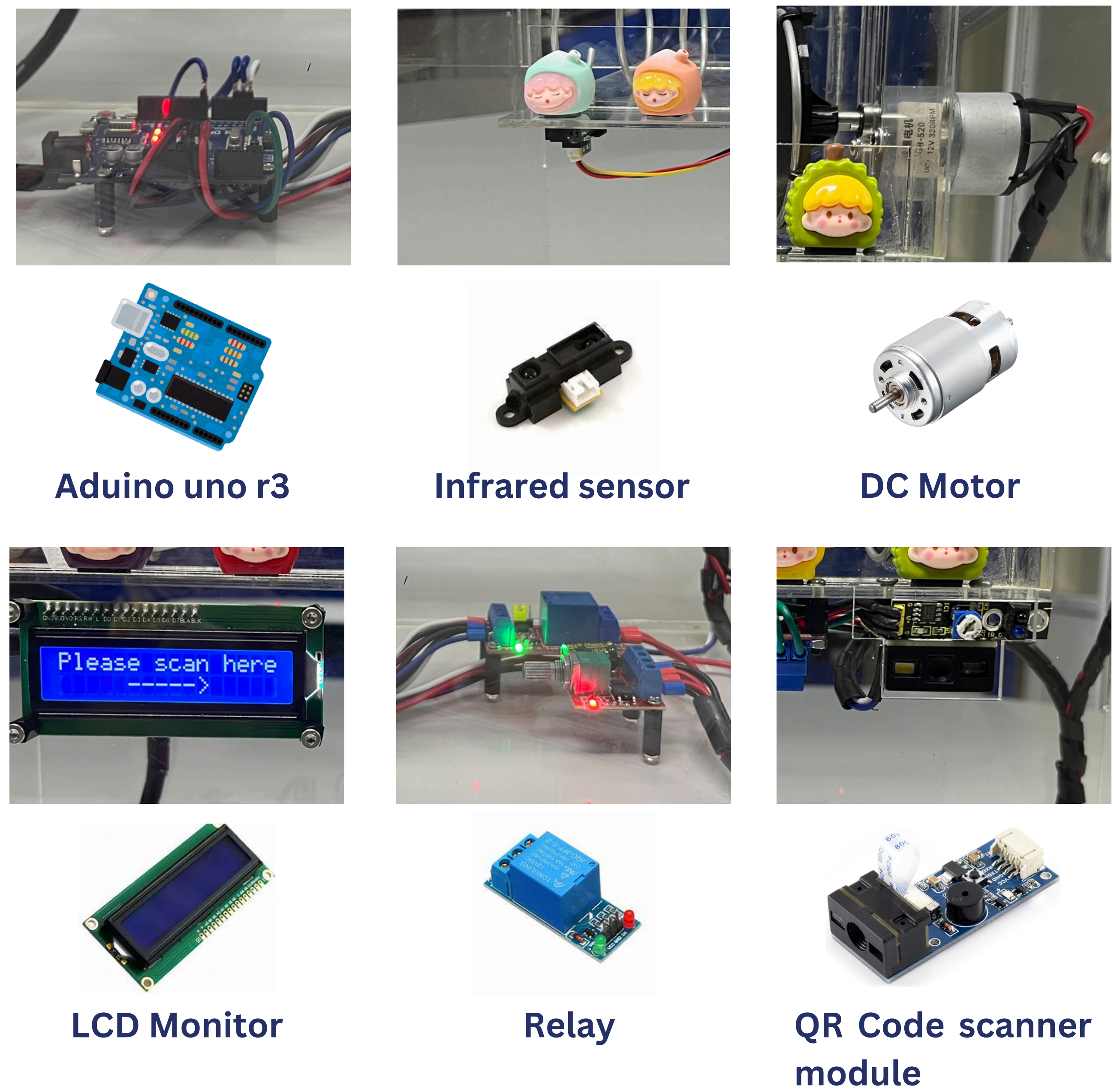


• FRAMEWORK

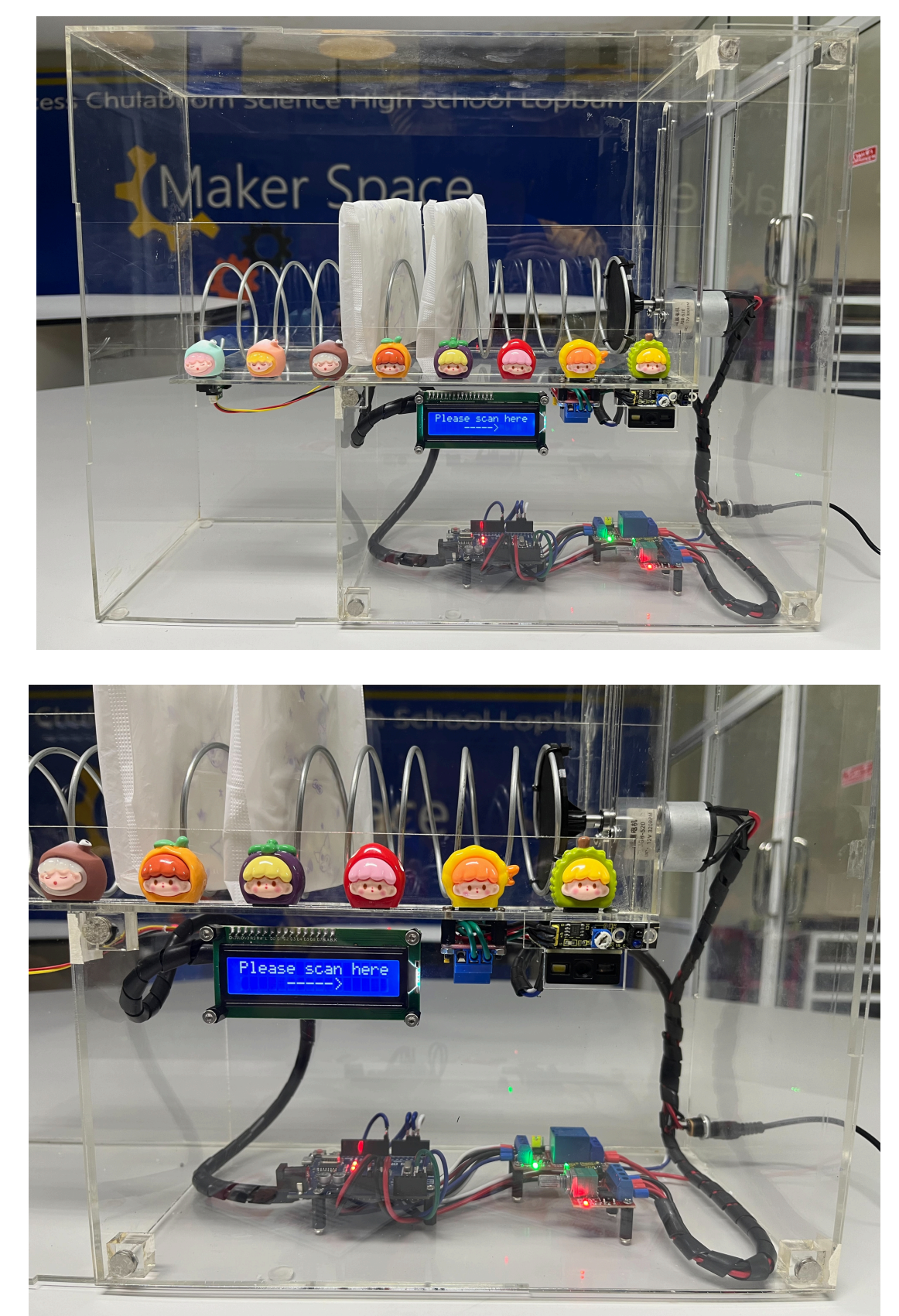
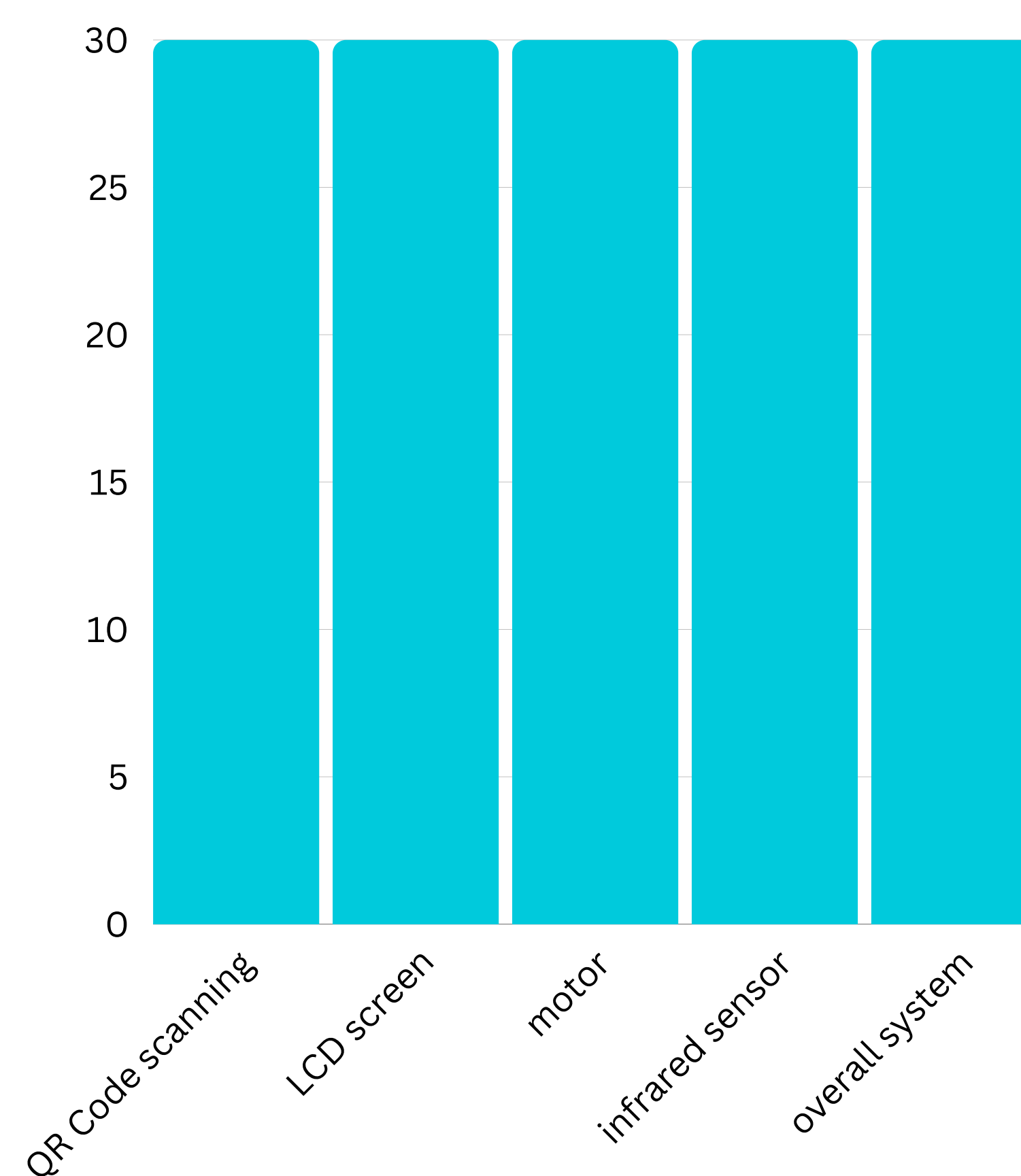


FINDING

• Devices



• Test result



INTERPRETATION AND CONCLUSION

From the experiment, it was found that the emergency sanitary napkin dispenser for students system can dispense item after passing. A total of 30 performance tests found that the QR Code scanning module, LCD screen, motor, infrared sensor, and system when scanned more than 4 times were able to work at 100%, 100%, 100%, 100, and 100% respectively with values The average efficiency is 100% and when surveying the system performance evaluation form from 3 experts, 3 aspects each: system requirements/features, suitability of system style, equipment selection. in creating a system It was found that the overall efficiency was at a very good level.

REFERENCE

จ. สิริพงษ์, ภูมิหายเกี่ยวกับสิ่งแวดล้อม, กรุงเทพฯ: สำนักพิมพ์วิบูลย์, 2549.
 16 พฤศจิกายน 2564. [Online]. Available: www.google.com.
 SUPPORT THAIEASYELEC, 2017. [ออนไลน์]. Available: <https://blog.thaieasyelec.com>
 onanong, "sogoodweb," 26 พฤศจิกายน 2021. [ออนไลน์]. Available: <https://blog.sogoodweb.com>
 "ks-barcode.com," ks-barcode, [ออนไลน์]. Available: <https://ks-barcode.com/barcode-scanner>.
 pmc, "pmc.co.th," 31 มีนาคม 2020. [ออนไลน์]. Available: <https://pmc.co.th>
 tha.jf-parede.pt, "tha.jf-parede.pt," [ออนไลน์]. Available: <https://tha.jf-parede.pt>
 น.ก.ทรดี, "mecha.sut.ac.th," 2018. [ออนไลน์]. Available: <http://mecha.sut.ac.th>